

# Install Chaos Desktop version 11

## Content

Software requirements .....	2
Operating systems.....	2
Hardware Recommendation .....	2
Add-ins for Microsoft Office .....	2
Add-ons for ProjectWise .....	2
Adtollo License Server .....	2
Install Chaos Desktop on computer with msi file.....	2
Register License.....	5
Install Chaos Desktop Office Add-ins .....	6
Packaged Installation (Preload).....	7
Preferences:.....	7
Register License .....	9

## Software requirements

Administrator permissions is necessary for installation.

### Operating systems

- Windows 10 or later
- .NET 4.8
- Visual Studio 2010 Tools for Office Runtime (10.0.60910)

### Hardware Recommendation

- Minimum 8 GB RAM

### Add-ins for Microsoft Office

Chaos Desktop add-in for Word, Excel and Outlook requires the following:

- 64- or 32-bit version of Office
- Visual Studio 2010 Tools for Office Runtime (10.0.60910)

The add-in for Word, Excel and Outlook is developed for at least Office 365.

### Add-ons for ProjectWise

Chaos Desktop's add-on for ProjectWise requires the following:

- Bentley ProjectWise Explorer version 10.00 or higher

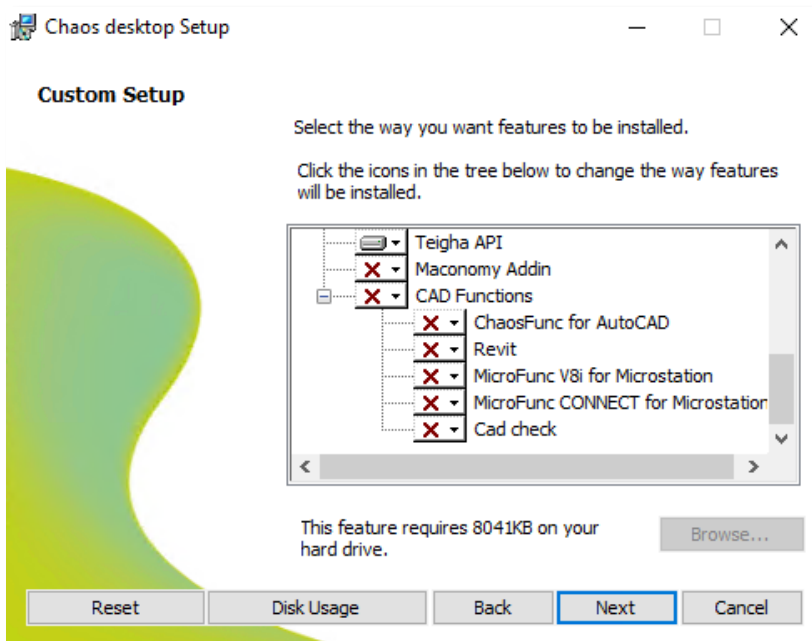
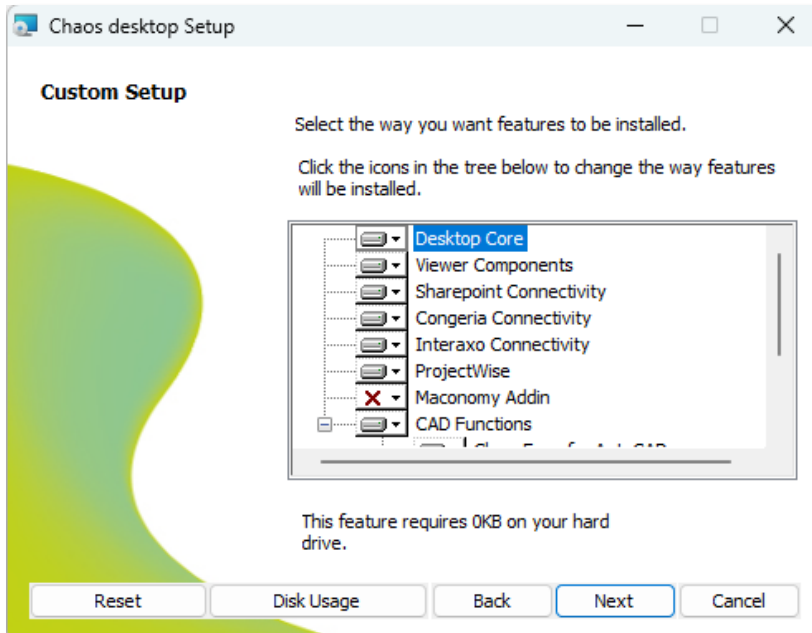
### Adtollo License Server

License server version requirements:

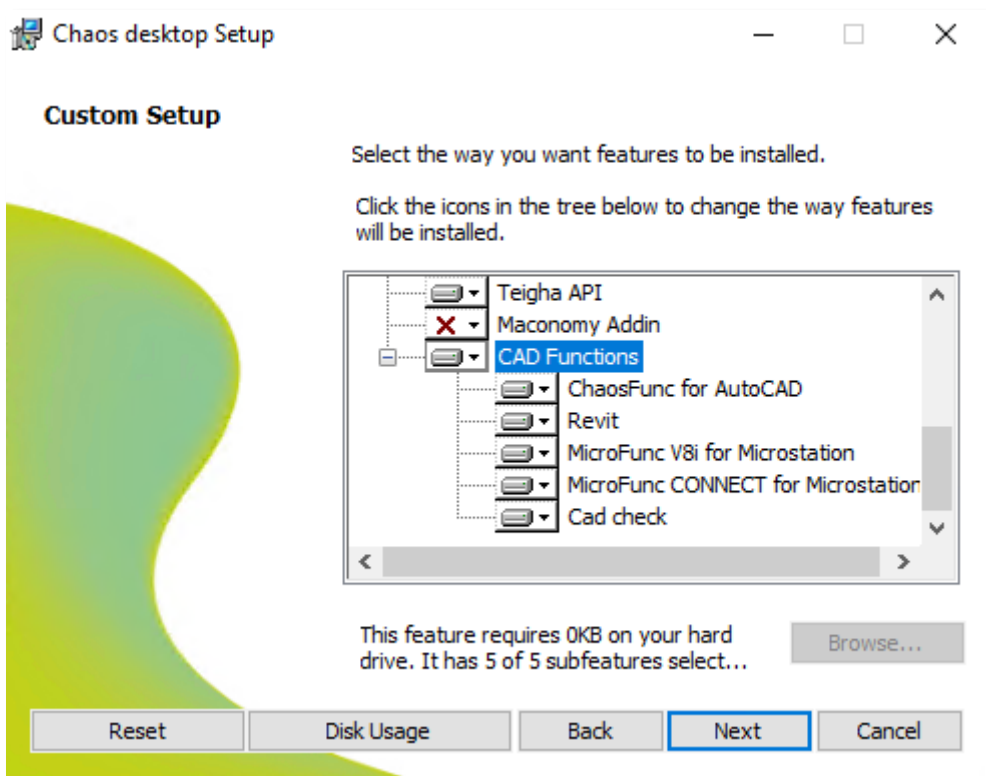
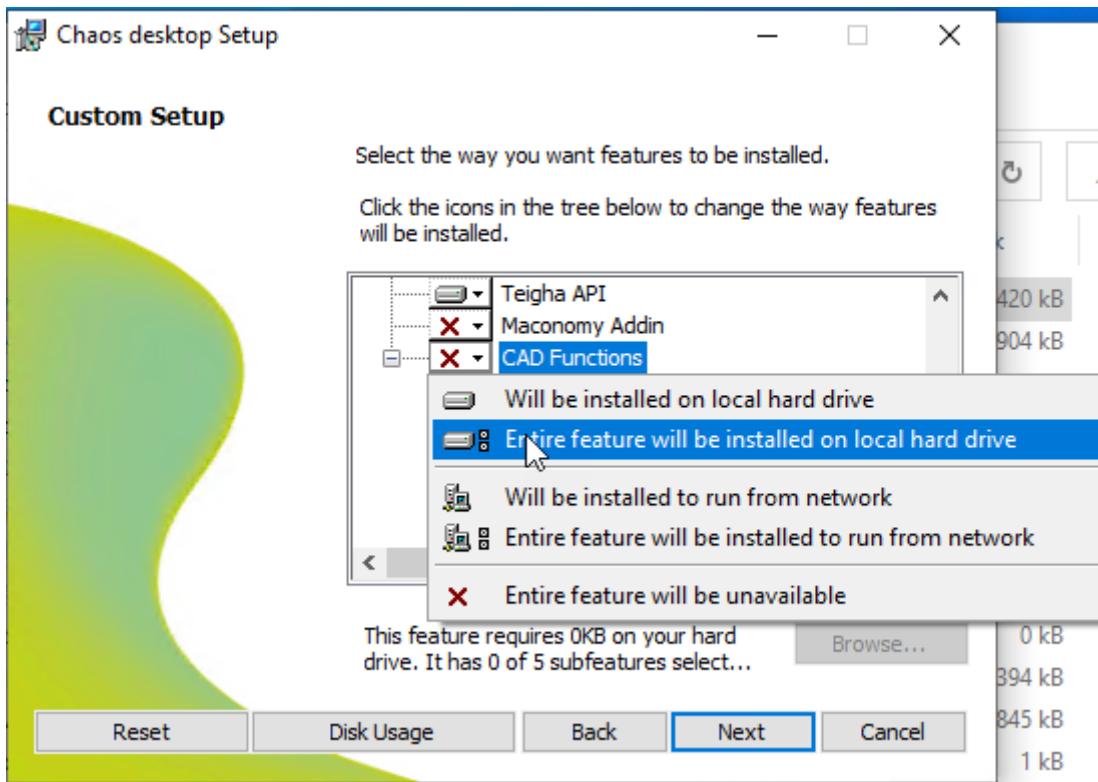
- Adtollo's Central License Manager

## Install Chaos Desktop on computer with msi file

Double-click the msi. Scroll down the list and choose to add or remove modules and add-ons.



If you want to add all CAD Functions, select “Entire feature will be installed on local hard drive”.



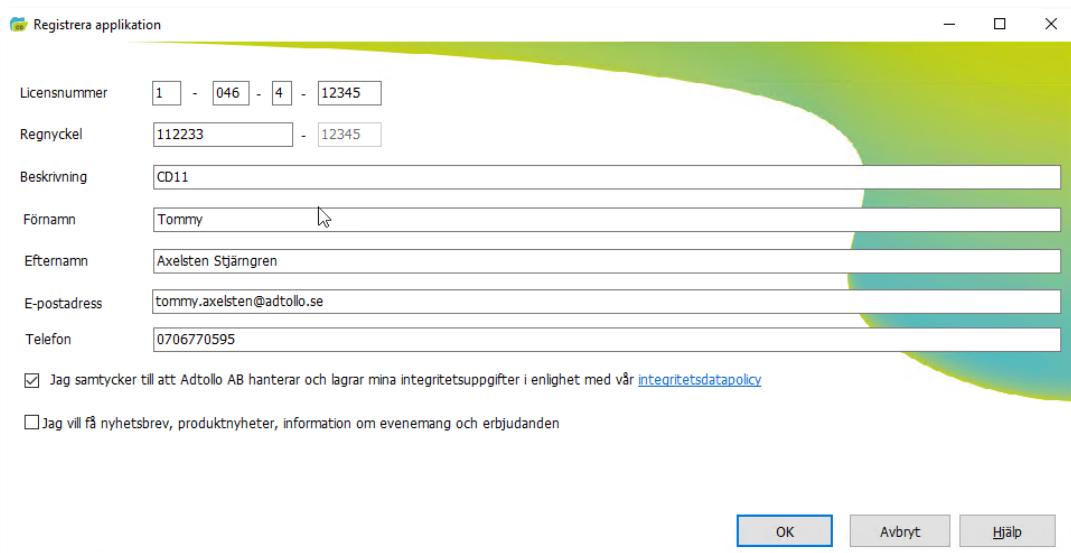
Click Next.

Install.

Finished!

## Register License

Start Chaos Desktop (you don't need to be an administrator on your computer) and follow the instructions.



Registrera applikation

Licensnummer: 1 - 046 - 4 - 12345

Regnyckel: 112233 - 12345

Beskrivning: CD11

Förnamn: Tommy

Efternamn: Axelsten Stjängren

E-postadress: tommy.axelsten@adtollo.se

Telefon: 0706770595

Jag samtycker till att Adtollo AB hanterar och lagrar mina integritetsuppgifter i enlighet med vår [integritetsdatapolcy](#)

Jag vill få nyhetsbrev, produktnyheter, information om evenemang och erbjudanden

OK Avbryt Hjäl



Bekräfta

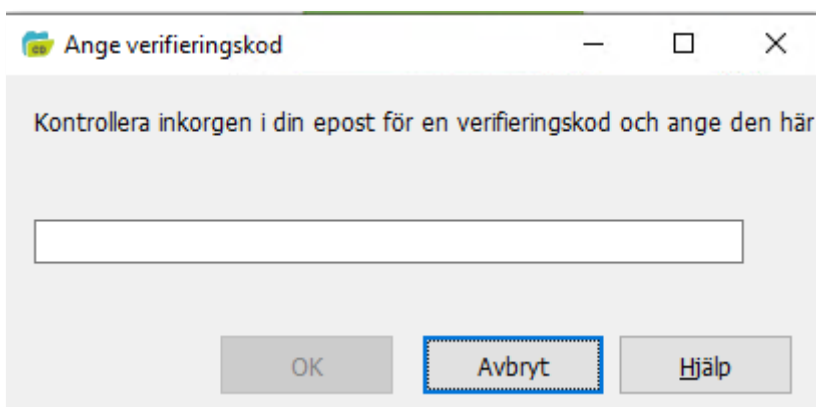
Om nödvändigt, kommer en verifieringskod skickas till tommy.axelsten@adtollo.se.

Vill du fortsätta?

Ja Nej

Paste the verification code from your inbox.

OK.



Ange verifieringskod

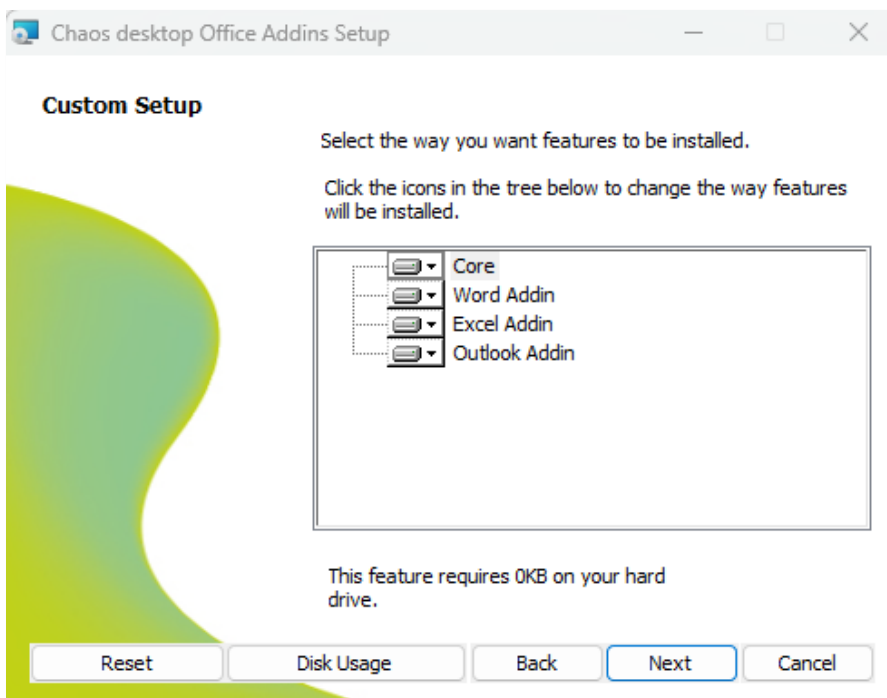
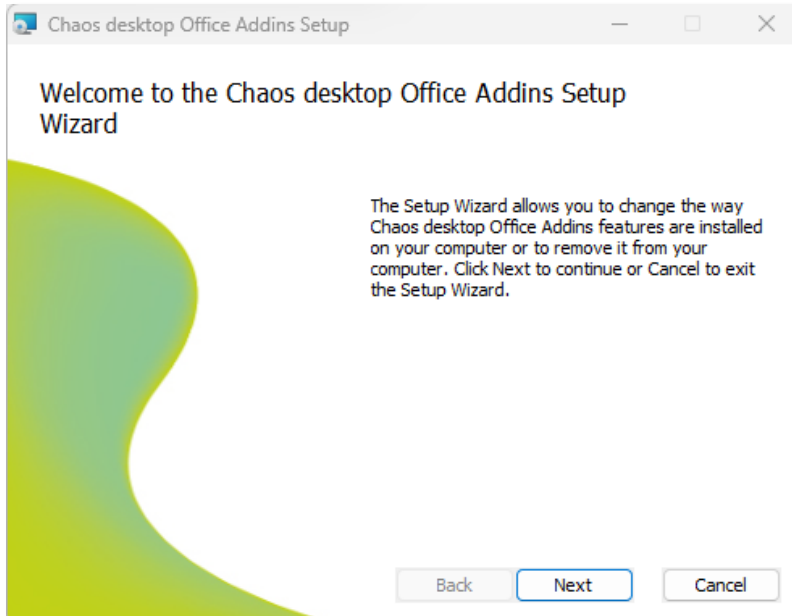
Kontrollera inkorgen i din epost för en verifieringskod och ange den här

OK Avbryt Hjäl

Finished!

## Install Chaos Desktop Office Add-ins

Download DesktopOfficeAddins\_100.msi and run the installation.



Finished!

## Packaged Installation (Preload)

It may contain license information, which makes the user's registration on the first boot look different. See registration below.

```
msiexec /i Desktop32.msi /qb CHAOSFUNC=1 REVIT=1 MICROFUNC_V8I=1 MICROFUNC_CONNECT=1
CADCHECK=1 LICENSENUMBER=XXXX REGKEY=XXXXXX LOCKTYPE=4 /L*V
"C:\Temp\Desktop32_preload.log"
```

- Add modules with =1
- License number: Last position in your license number 1-046-4-12345
- Regkey: Registration number according to your license certificate **112233**
- Locktype: **3**= Single License, **4**=Network License.
- /L\*V, log file is created in the specified path.

```
Product:           Chaos Desktop 11
License No:        1-046-4-12345
Modules:           01 02 03 04 05 06 07
Registration Key:  112233-12345
```

### Preferences:

When packaging Chaos Desktop, you can include a registry file.

```
Windows Registry Editor Version 5.00
[HKEY_LOCAL_MACHINE\Software\Wow6432Node\Adtollo\Chaos
Desktop\Settings\General]
"LocalDocumentTemplates"="C:\\ProgramData\\Adtollo\\Chaos
Desktop\\Config\\DocTempl.xml"
"LocalProjectTemplatesPath"="C:\\ProgramData\\Adtollo\\Chaos
Desktop\\Templates\\Projects\\"
"LocalProgramStarts"="C:\\ProgramData\\Adtollo\\Chaos
Desktop\\Config\\ProgStart.xml"
"LocalProjects"="C:\\ProgramData\\Adtollo\\Chaos
Desktop\\Config\\ShortcutSettings.xml"
"LocalBatchCommands"="C:\\ProgramData\\Adtollo\\Chaos
Desktop\\Config\\BatchSettings.xml"
"LocalBatchFavorites"="C:\\ProgramData\\Adtollo\\Chaos
Desktop\\Config\\BatchFavorites.xml"
"LocalSynchronizations"="C:\\ProgramData\\Adtollo\\Chaos
Desktop\\Config\\Synchronizations.xml"
"LocalDigiTejpMarkings"="C:\\ProgramData\\Adtollo\\Chaos
Desktop\\Config\\DigiTejpLocal.xml"
"ExcludeExtensions"="; bak"
"ExcludeExtensionsActive"=dword:00000001
"ReportXMLEncoding"="UTF-8"
"DragDropEnabled"=dword:00000000
"IncludeModels"=dword:00000000
"SelectEntireRow"=dword:00000001
"NonNumericalSort"=dword:00000000
"UpdateFoldersEverytimeOpened"=dword:00000000
"CommonDocumentTemplates"=""
"CommonProjectTemplatesPath"=""
"CommonProjectRoot"="C:\\ProgramData\\Adtollo\\Chaos Desktop\\Project"
"CommonProgramStarts"=""
```

```

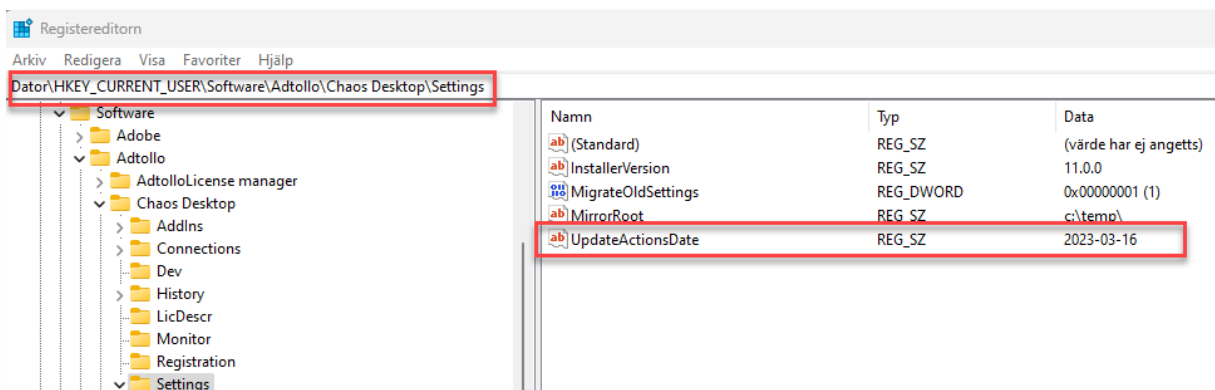
"CommonProjects"="C:\\ProgramData\\Adtollo\\Chaos
Desktop\\Config\\CommonSettings.xml"
"CommonBatchCommands"=""
"CommonDigiTejpMarkings"="C:\\ProgramData\\Adtollo\\Chaos
Desktop\\Config\\DigiTejpCommon.xml"
"CommonAdditionalHelpFiles"="C:\\Program Files (x86)\\Adtollo\\Chaos
Desktop\\own help file.txt"
[HKEY_LOCAL_MACHINE\\Software\\Wow6432Node\\Adtollo\\Chaos
viewer\\PrintSettings]
"Local"="C:\\ProgramData\\Adtollo\\Chaos
Desktop\\Config\\PrintSettings.xml"
"Common"=""
[HKEY_LOCAL_MACHINE\\Software\\Wow6432Node\\Adtollo\\Chaos
viewer\\SaveAsSettings]
"Local"="C:\\ProgramData\\Adtollo\\Chaos Desktop\\Config\\ConvSettings.xml"
"Common"=""
[HKEY_LOCAL_MACHINE\\Software\\Wow6432Node\\Adtollo\\Chaos viewer\\ViewSettings]
"Common"=""
[HKEY_LOCAL_MACHINE\\Software\\Wow6432Node\\Rasterex\\RxFilters\\RxFilterACAD]
"FontFolders"="C:\\ProgramData\\Autodesk\\ApplicationPlugins\\ChaosFunc.bundle\\
Contents\\Resources\\Fonts"
"UseDefaultFont"=dword:00000001
"DefaultFont"="C:\\ProgramData\\Autodesk\\ApplicationPlugins\\ChaosFunc.bundle\\
Contents\\Resources\\Fonts\\ISO.SHX"
[HKEY_LOCAL_MACHINE\\Software\\Wow6432Node\\Adtollo\\Chaos
Desktop\\Settings\\Additional\\]
"FileLogging"=1

```

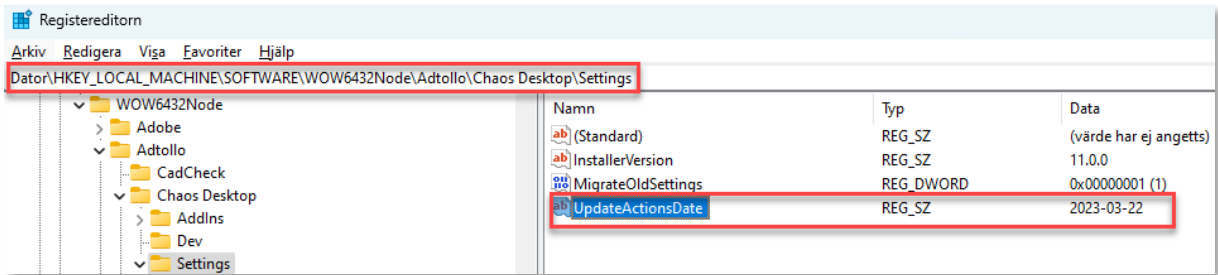
Settings are written to Hkey\_Local\_Machine. On the first boot of the Chaos desktop, they are written to Hkey\_Current\_User.

There is a date setting in the register that determines whether Hkey\_Local\_Machine is copied or not. Good to keep track of when upgrading. Depending on whether you want settings to be overwritten with new ones or not.

In the images below, you can see that the date in Hkey\_Local\_Machine is later than in Hkey\_Current\_User, which means that when starting Chaos desktop, copy settings from Hkey\_Local\_Machine to Hkey\_Current\_User.







Register License

Start Chaos Desktop.

The dialog is "minor" missing information about license number, registration key.

Registrera Applikationen kvarvarande

Förnamn: Tommy

Efternamn: Axelsten Stjärngren

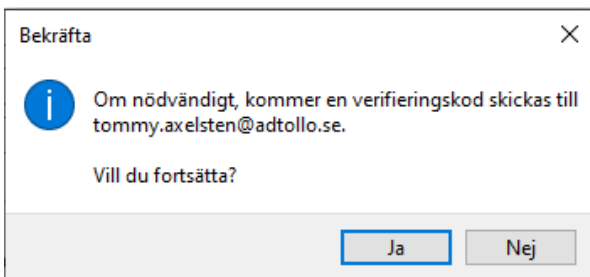
E-postadress: tommy.axelsten@adtollo.se

Telefon: 0706770595

Jag samtycker till att Adtollo AB hanterar och lagrar mina integritetsuppgifter i enlighet med vår [integritetsdatapolicy](#)

Jag vill få nyhetsbrev, produktnyheter, information om evenemang och erbjudanden

OK Avbryt Hjälp



Paste the verification code from your inbox.

OK.

Ange verifieringskod

Kontrollera inkorgen i din epost för en verifieringskod och ange den här

OK Avbryt Hjälp

Finished!